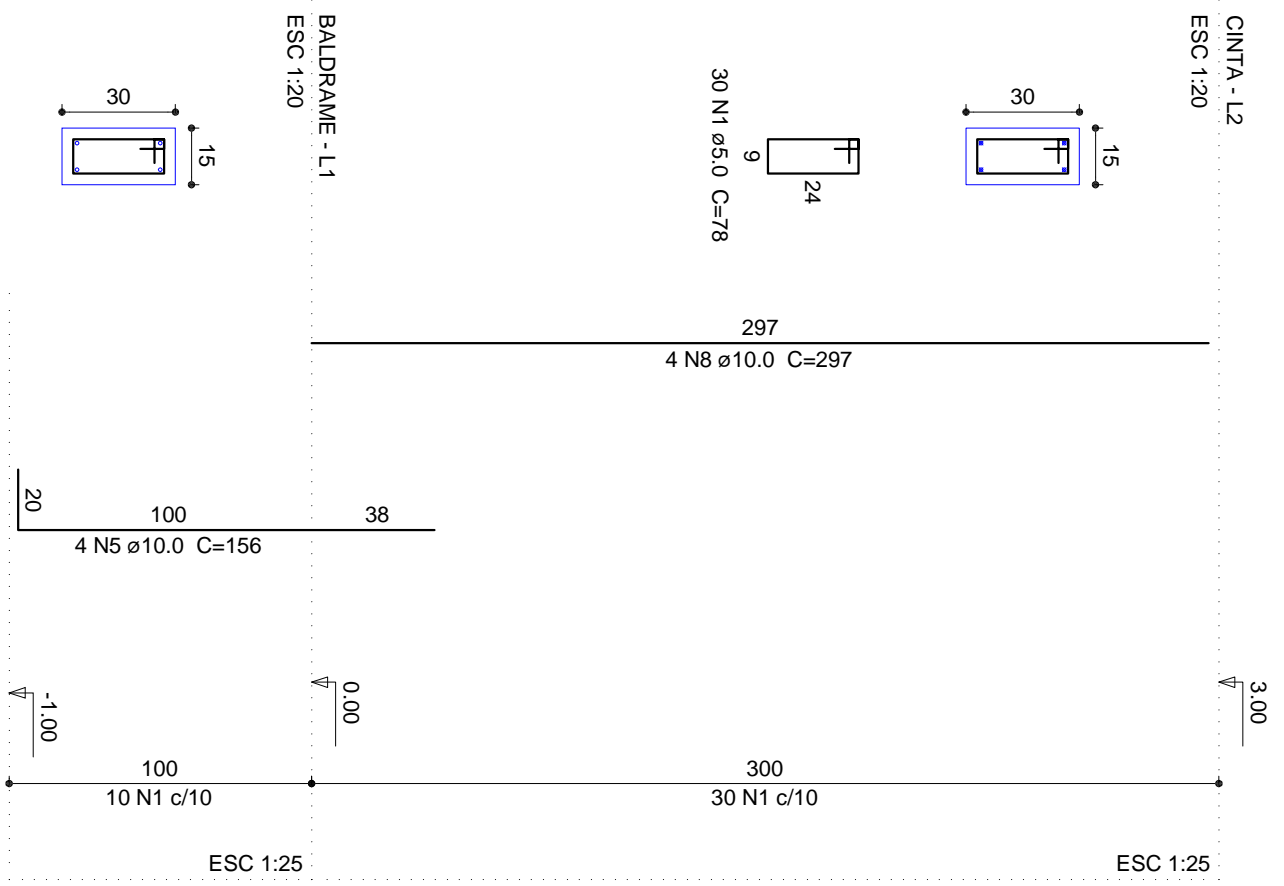
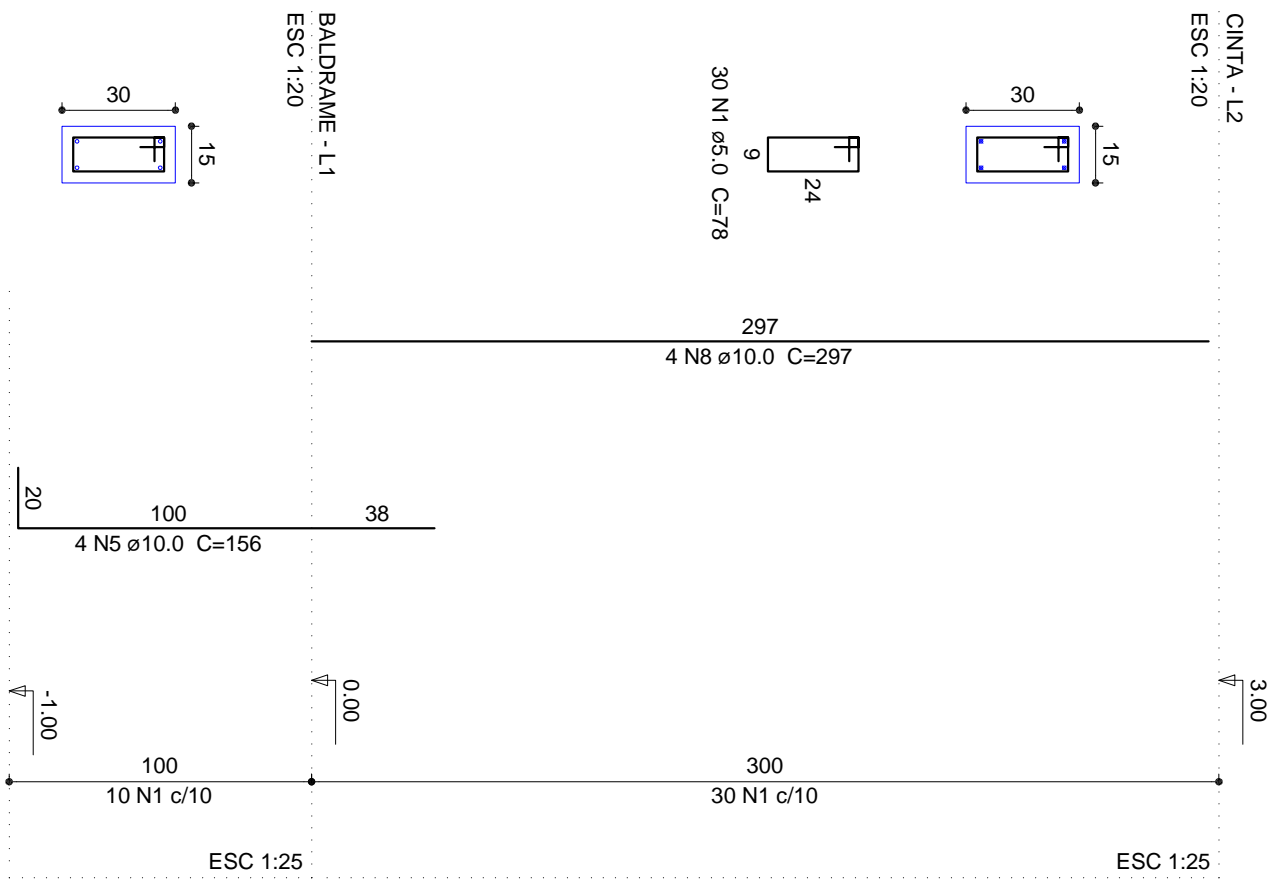


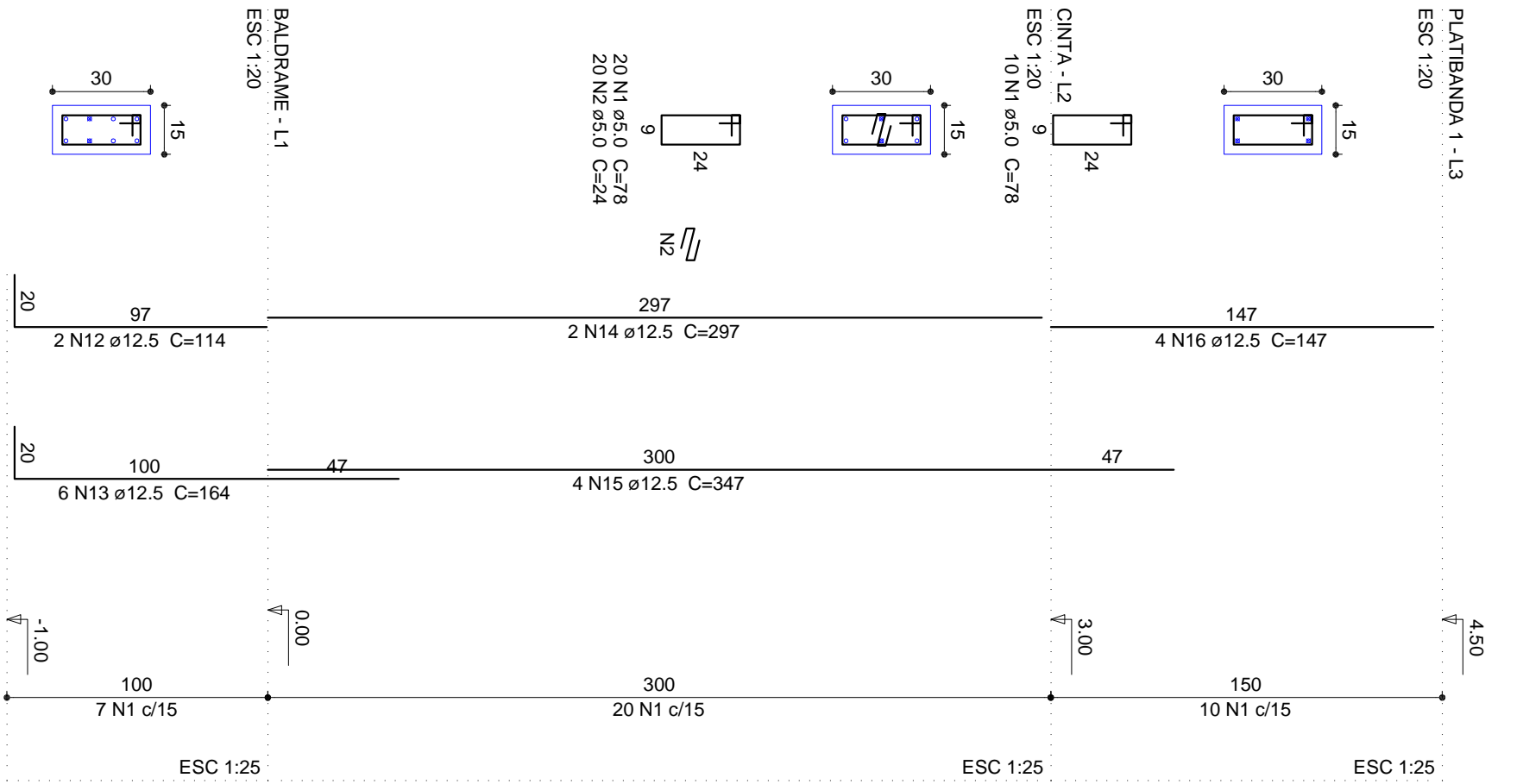
P13



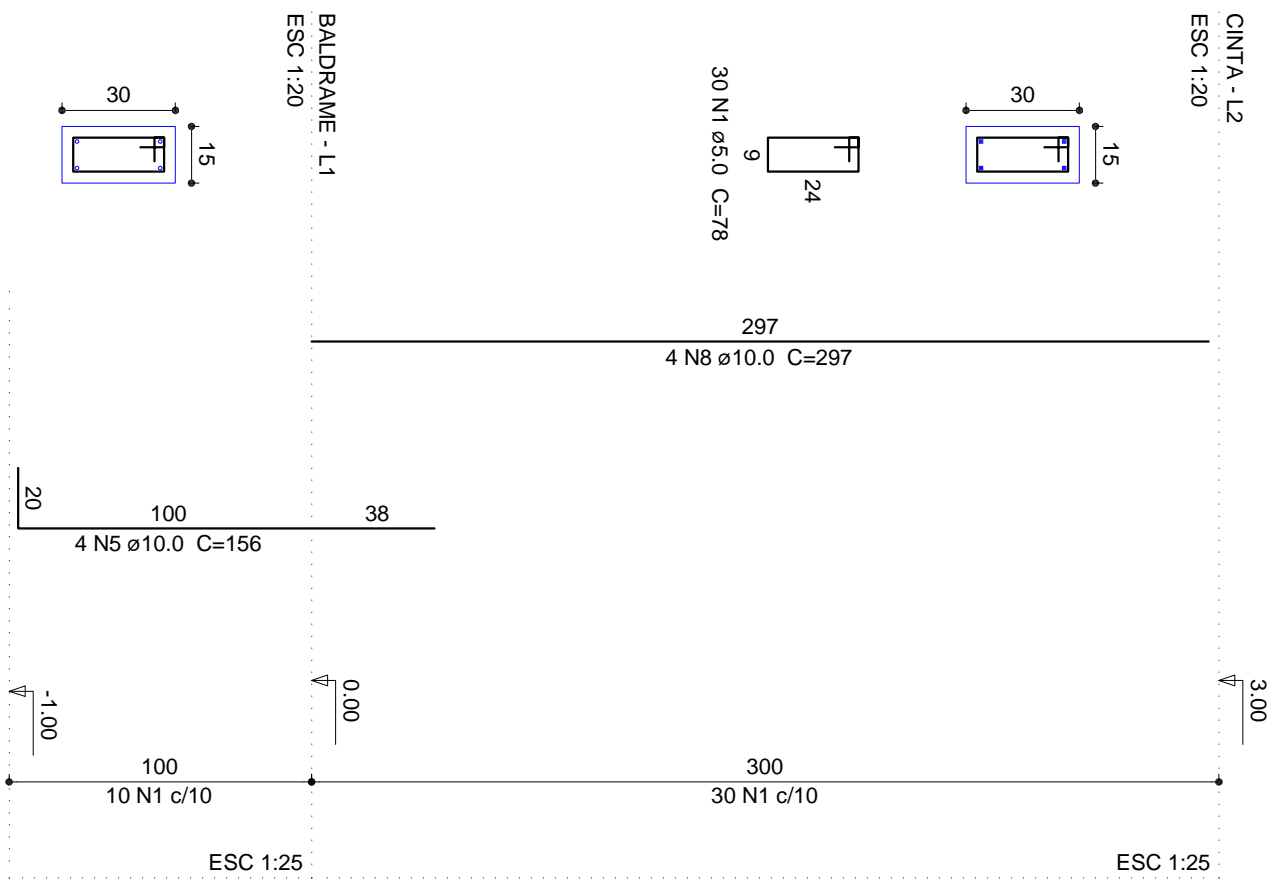
P14



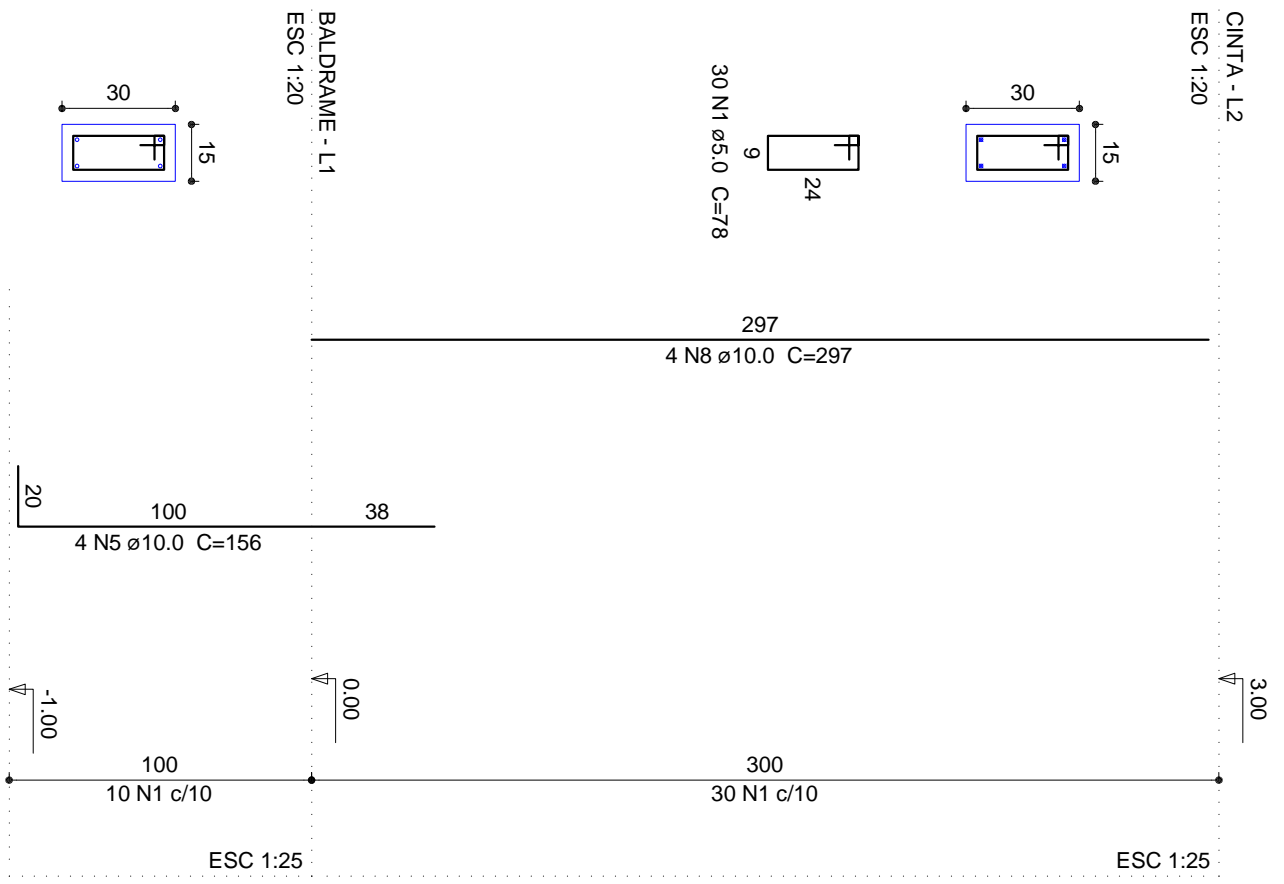
P15



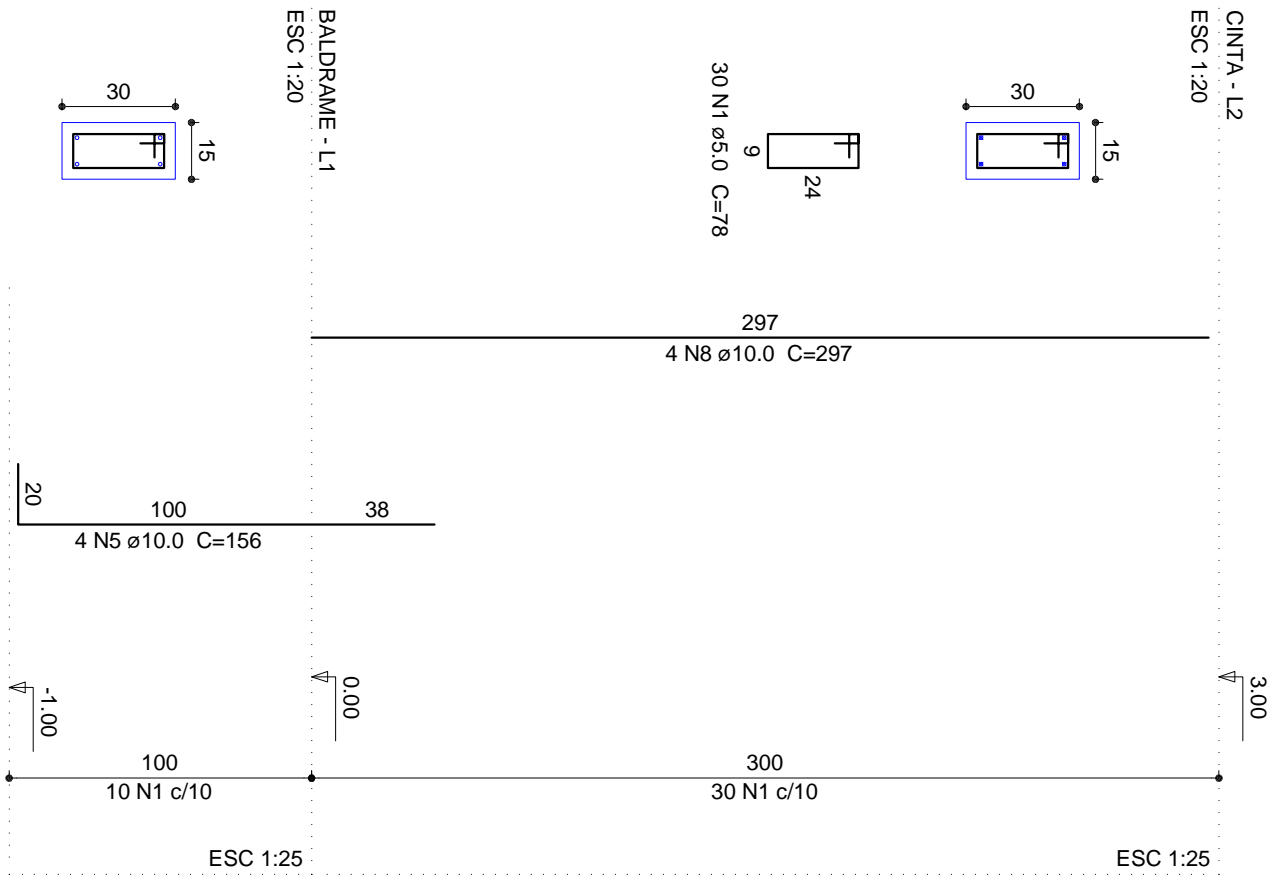
P16



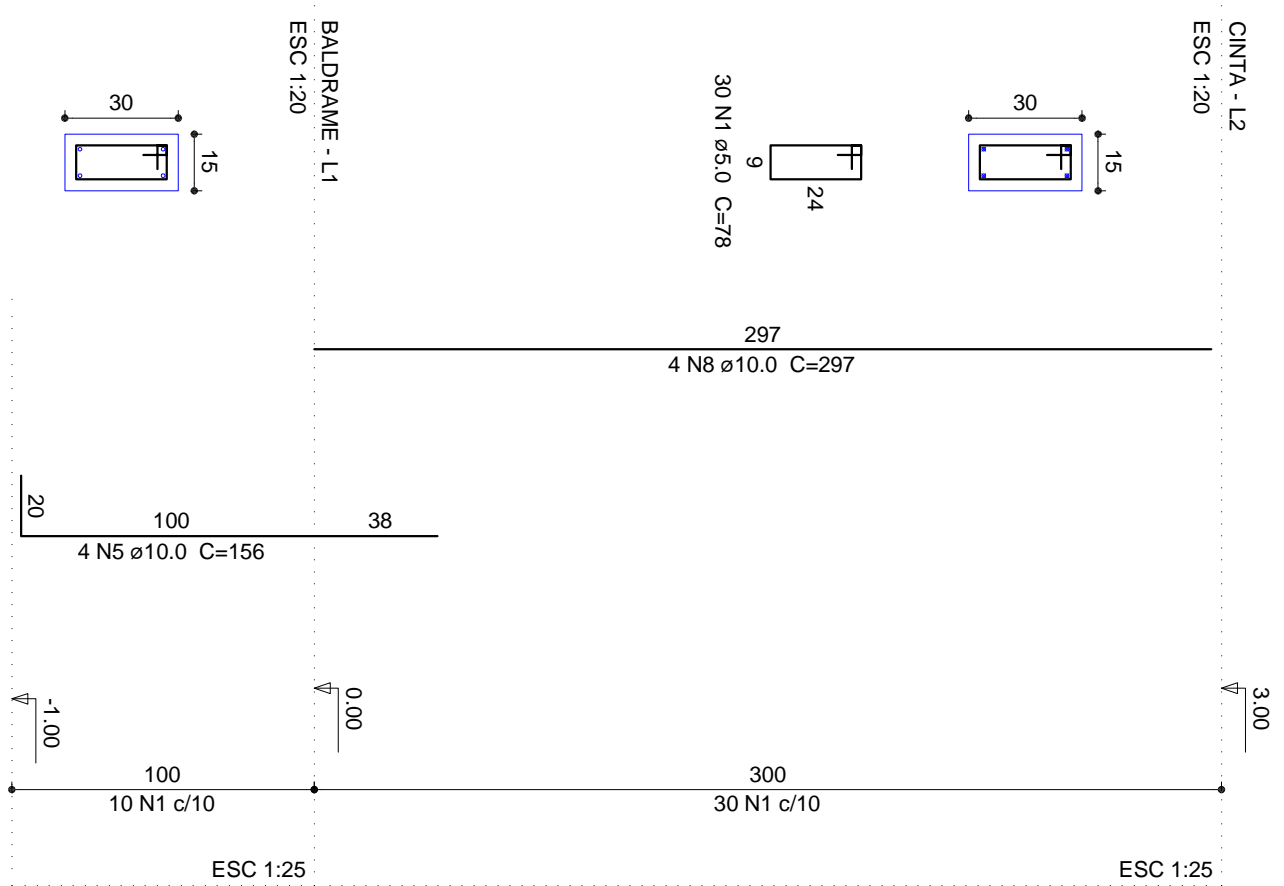
P17



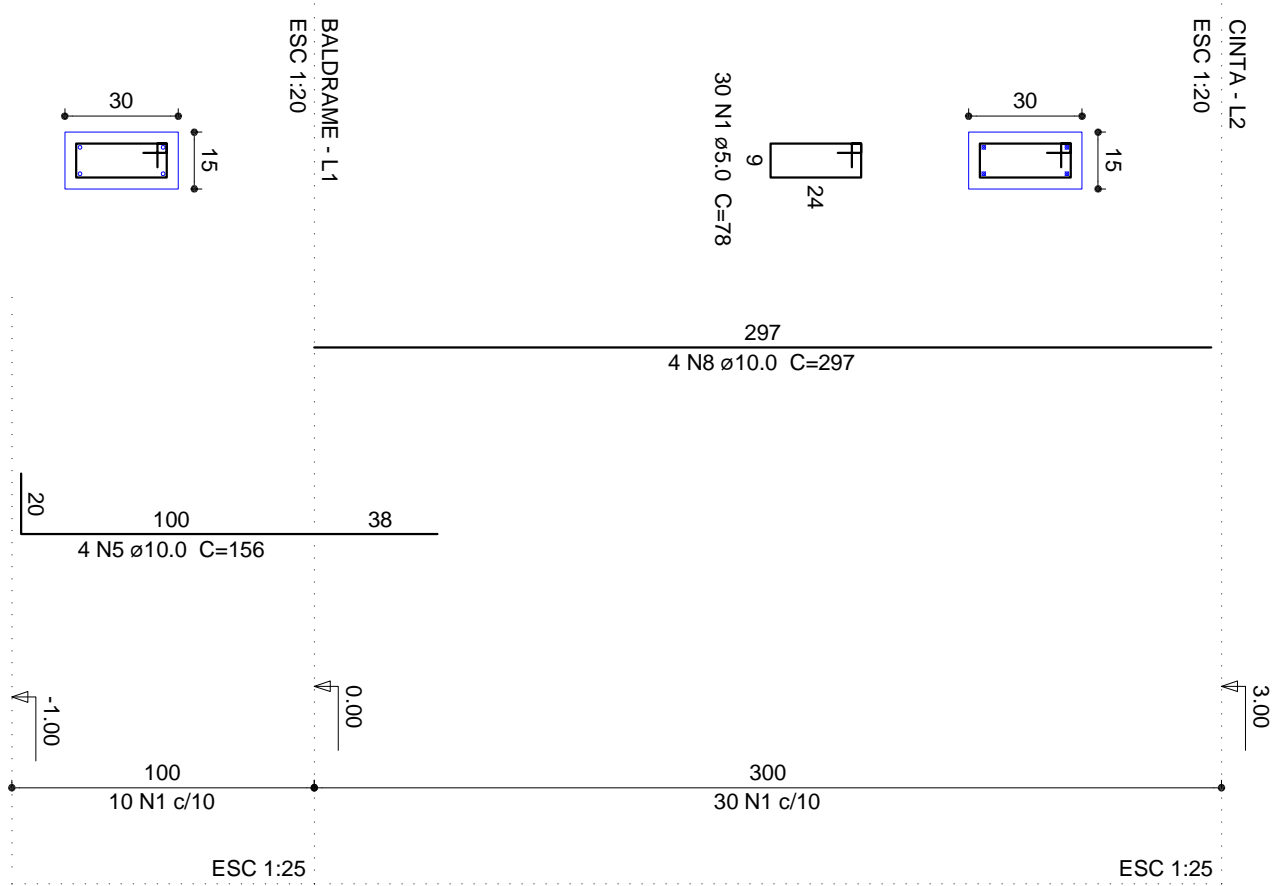
P18



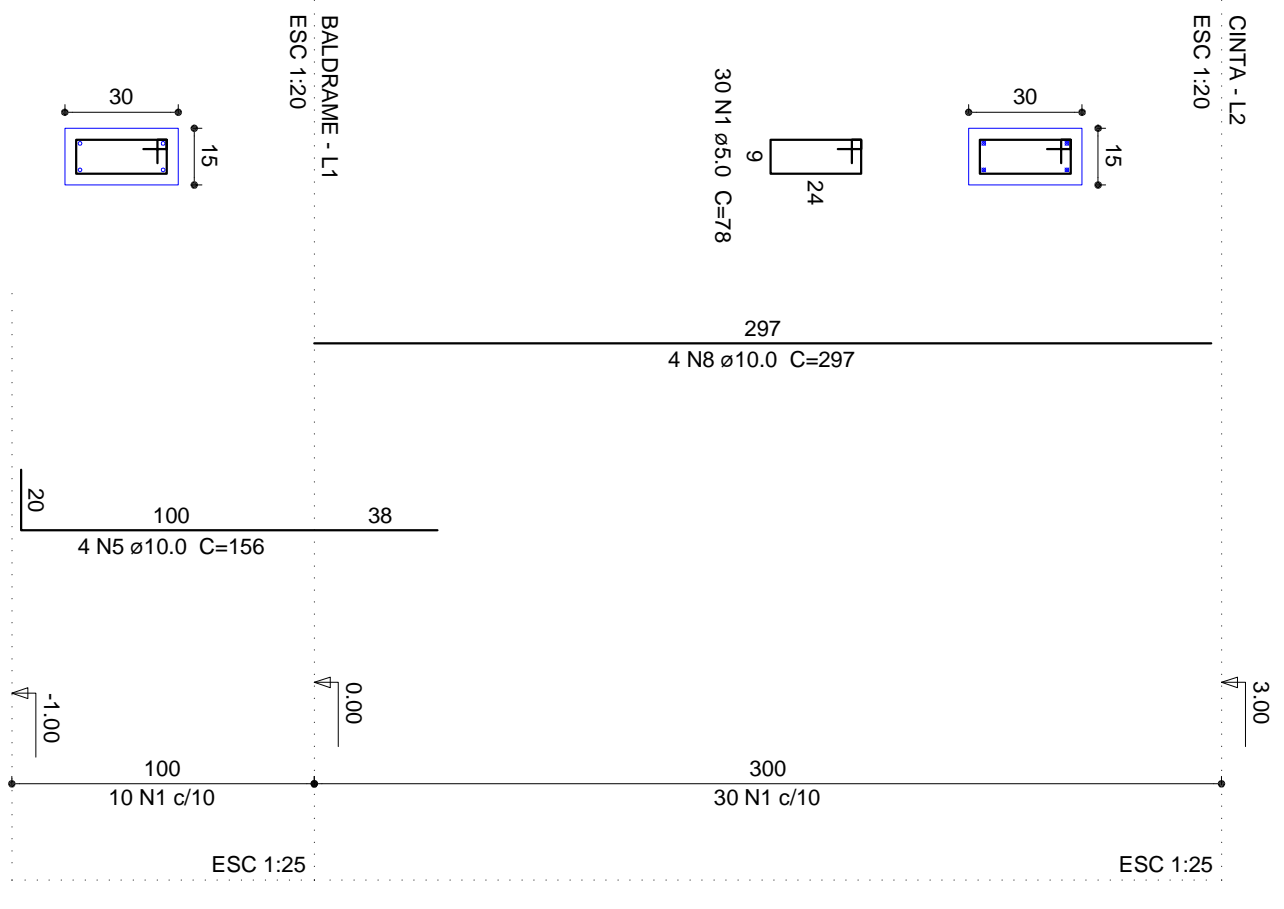
P19



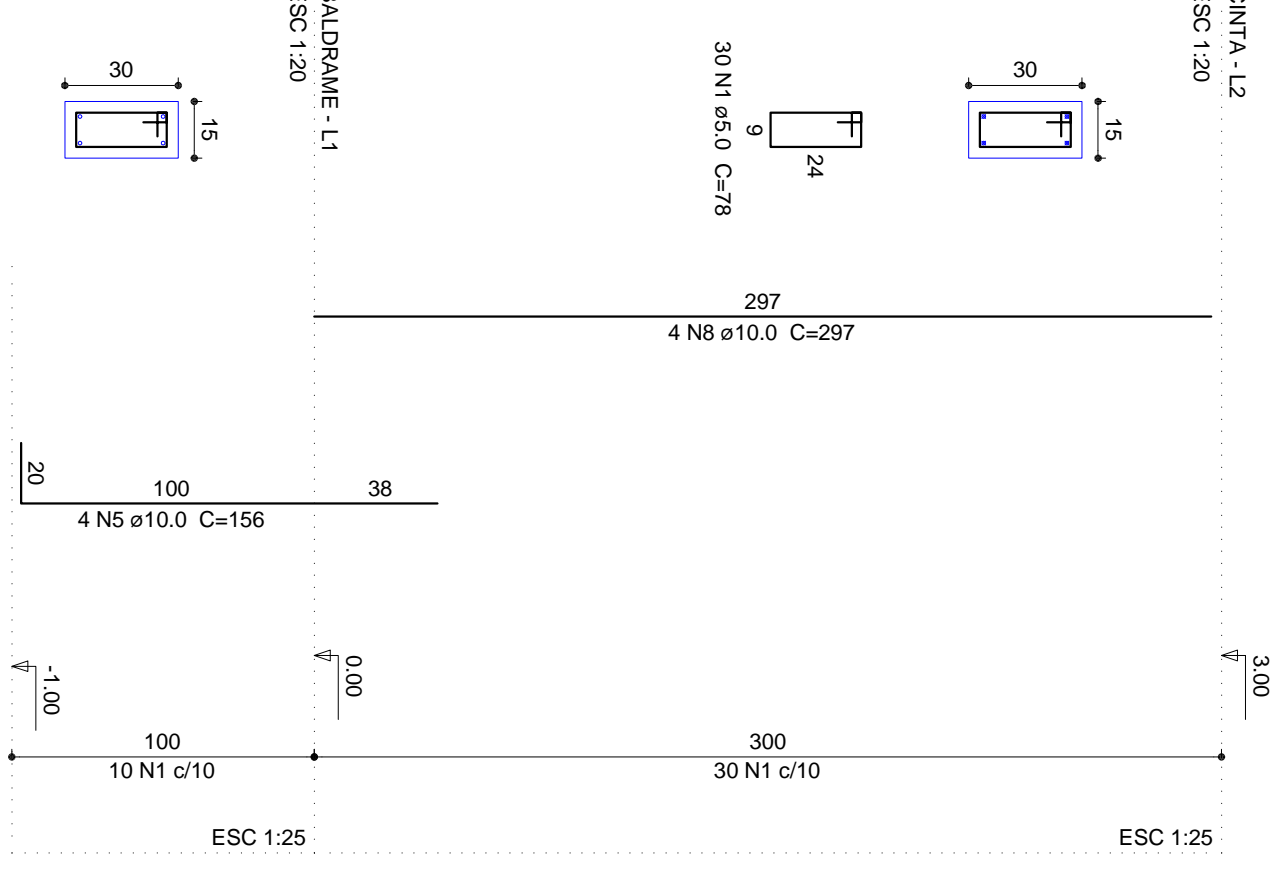
P20



P21



P22



Tipo de Obra:		Modalidade:	
Institucional		Construção	
Obra:		UBS - TIPO II	
Proprietário:		Prefeitura Municipal de Varzea Grande - MT	
Endereço:			
Autor do Projeto:			
Responsável Técnico P/ obra:			
Projeto Estrutural			
Assunto: VC E.V.P		Quadro de Áreas	

FOLHA Nº  
10/15

Data: Setembro de 2014		Arquivo: Desenho de Valdecir Silve	
Arquivo: Desenho de Valdecir Silve			